



REGIONAL SPECIALISED METEOROLOGICAL CENTRE-TROPICAL CYCLONES, NEW DELHI TROPICAL WEATHER OUTLOOK

DEMS-RSMC TROPICAL CYCLONES NEW DELHI DATED 25.08.2024

TROPICAL WEATHER OUTLOOK FOR NORTH INDIAN OCEAN (THE BAY OF BENGAL AND THE ARABIAN SEA) VALID FOR NEXT 168 HOURS ISSUED AT 0500 UTC OF 25.08.2024 BASED ON 0000 UTC OF 25.08.2024.

LAND DEPRESSION OVER CENTRAL INDIA:

SUB: DEPRESSION OVER NORTHWEST MADHYA PRADESH AND NEIGHBOURHOOD

THE WELL MARKED LOW PRESSURE AREA OVER CENTRAL PARTS OF NORTH MADHYA PRADESH MOVED WESTWARDS, INTENSIFIED INTO A DEPRESSION AND LAY CENTERED AT 0000 UTC OF TODAY, THE 25TH AUGUST OVER NORTHWEST MADHYA PRADESH AND NEIGHBOURHOOD NEAR LATITUDE 24.5°N AND LONGITUDE 77.3°E, CLOSE TO GUNA (WEST MADHYA PRADESH) AND 160 KM EAST-SOUTHEAST OF KOTA (EAST RAJASTHAN).

IT IS LIKELY TO MOVE NEARLY WEST-SOUTHWESTWARDS, INTENSIFY FURTHER INTO A DEEP DEPRESSION OVER SOUTH RAJASTHAN AND ADJOINING NORTH GUJARAT BY 27TH AUGUST. THEREAFTER, IT WILL CONTINUE TO MOVE NEARLY WEST-SOUTHWESTWARDS AND EMERGE INTO NORTHEAST ARABIAN SEA OFF SAURASHTRA & KUTCH AND SOUTH PAKISTAN COASTS AROUND 29TH AUGUST.

CLOUDS ASSOCIATED WITH DEPRESSION OVER NORTHWEST MADHYA PRADESH & NEIGHBOURHOOD. ASSOCIATED SCATTERED TO BROKEN LOW AND MEDIUM CLOUDS WITH EMBDD INTENSE TO VERY INTENSE CONVECTION LAY OVER MADHYA PRADESH ADJOINING SOUTHWEST UTTAR PRADESH, EAST RAJASTHAN, GUJARAT, MAHARASHTRA (MINIMUM CLOUD TOP TEMPERATURE(CTT) MINUS 93⁰ C) AND MODERATE TO INTENSE CONVECTION LAY OVER CHHATTISGARH (MINIMUM CTT MINUS 50⁰-60⁰ C).

ASSOCIATED MAXIMUM SUSTAINED WIND SPEED IS 20 KTS GUSTING TO 30 KTS. ESTIMATED CENTRAL PRESSURE IS 997 HPA. GUNA REPORTED MEAN SEA LEVEL PRESSURE OF 997.1 HPA WITH DEPARTURE OF -6.6 HPA AND PRESSURE CHANGE IN 24 HOURS AS -5.3 HPA.

BAY OF BENGAL:

YESTERDAY'S UPPER AIR CYCLONIC CIRCULATION OVER NORTH BAY OF BENGAL LAY OVER SOUTH BANGLADESH & NEIGHBOURHOOD EXTENDING UPTO MIDDLE TROPOSPHERIC LEVEL AT 0000 UTC OF TODAY, THE 25TH AUGUST 2024. UNDER ITS

INFLUENCE, A LOW PRESSURE AREA IS LIKELY TO FORM OVER THE SAME REGION DURING NEXT 24 HOURS AND MOVE WEST-NORTHWESTWARDS ACROSS GANGETIC WEST BENGAL, NORTH ODISHA AND JHARKHAND DURING NEXT 2 DAYS.

CLOUDS ASSOCIATED WITH CYCLONIC CIRCULATION LAY OVER NORTH BAY OF BENGAL ADJOINING COASTAL BANGLADESH & NEIGHBOURHOOD. ASSOCIATED BROKEN LOW AND MEDIUM CLOUDS WITH EMBEDDED INTENSE TO VERY INTENSE CONVECTION LAY OVER COASTAL GANGETIC WEST BENGAL, BANGLADESH & NORTH BAY OF BENGAL (MINIMUM CTT MINUS 93⁰C) AND MODERATE TO INTENSE CONVECTION LAY OVER REST OF GANGETIC WEST BENGAL & ODISHA.

SEA CONDITION AND ADVISORY FOR FISHERMEN:

- SQUALLY WEATHER WITH WIND SPEED REACHING 30-40 KMPH GUSTING 50 KMPH AND ROUGH SEA CONDITION IS VERY LIKELY TO PREVAIL OVER NORTH BAY OF BENGAL AND ALONG & OFF NORTH ODISHA, WEST BENGAL, BANGLADESH COASTS ON 25TH AND 26TH AUGUST.
- FISHERMEN ARE ADVISED NOT TO VENTURE INTO NORTH BAY OF BENGAL AND ALONG & OFF NORTH ODISHA, WEST BENGAL, BANGLADESH COASTS ON 25TH AND 26TH AUGUST.

***PROBABILITY OF CYCLOGENESIS (FORMATION OF DEPRESSION) DURING NEXT 168 HRS:**

24 HOURS	24-48 HOURS	48-72 HOURS	72-96 HOURS	96-120 HOURS	120-144 HOURS	144-168 HOURS
NIL	NIL	NIL	NIL	NIL	NIL	NIL

*NOTE: EVERY 24HR FORECAST IS VALID UPTO 0300 UTC (0830 IST) OF NEXT DAY

ARABIAN SEA:

(III) SEA CONDITION AND ADVISORY FOR FISHERMEN:

- SQUALLY WEATHER WITH WIND SPEED REACHING 55-65 KMPH GUSTING TO 75 KMPH WITH ROUGH TO VERY ROUGH SEA CONDITIONS IS VERY LIKELY TO PREVAIL ALONG & OFF PAKISTAN, GUJARAT & NORTH MAHARASHTRA COASTS AND NORTHEAST & ADJOINING EASTCENTRAL ARABIAN SEA TILL 30TH AUGUST.
- FISHERMEN ARE ADVISED NOT VENTURE INTO NORTHEAST & ADJOINING EASTCENTRAL ARABIAN SEA AND ALONG & OFF PAKISTAN GUJARAT & NORTH MAHARASHTRA COASTS TILL 30TH AUGUST.

SCATTERED TO BROKEN LOW AND MEDIUM CLOUDS WITH EMBEDDED INTENSE TO VERY INTENSE CONVECTION OVER EASTCENTRAL ARABIAN SEA, GULF OF KUTCH & GULF OF CAMBAY. SCATTERED LOW AND MEDIUM CLOUDS WITH EMBEDDED MODERATE TO INTENSE CONVECTION LAY OVER WESTCENTRAL ARABIAN SEA AND WEAK TO MODERATE CONVECTION LAY OVER REST OF ARABIAN SEA.

***PROBABILITY OF CYCLOGENESIS (FORMATION OF DEPRESSION) DURING NEXT 168 HRS:**

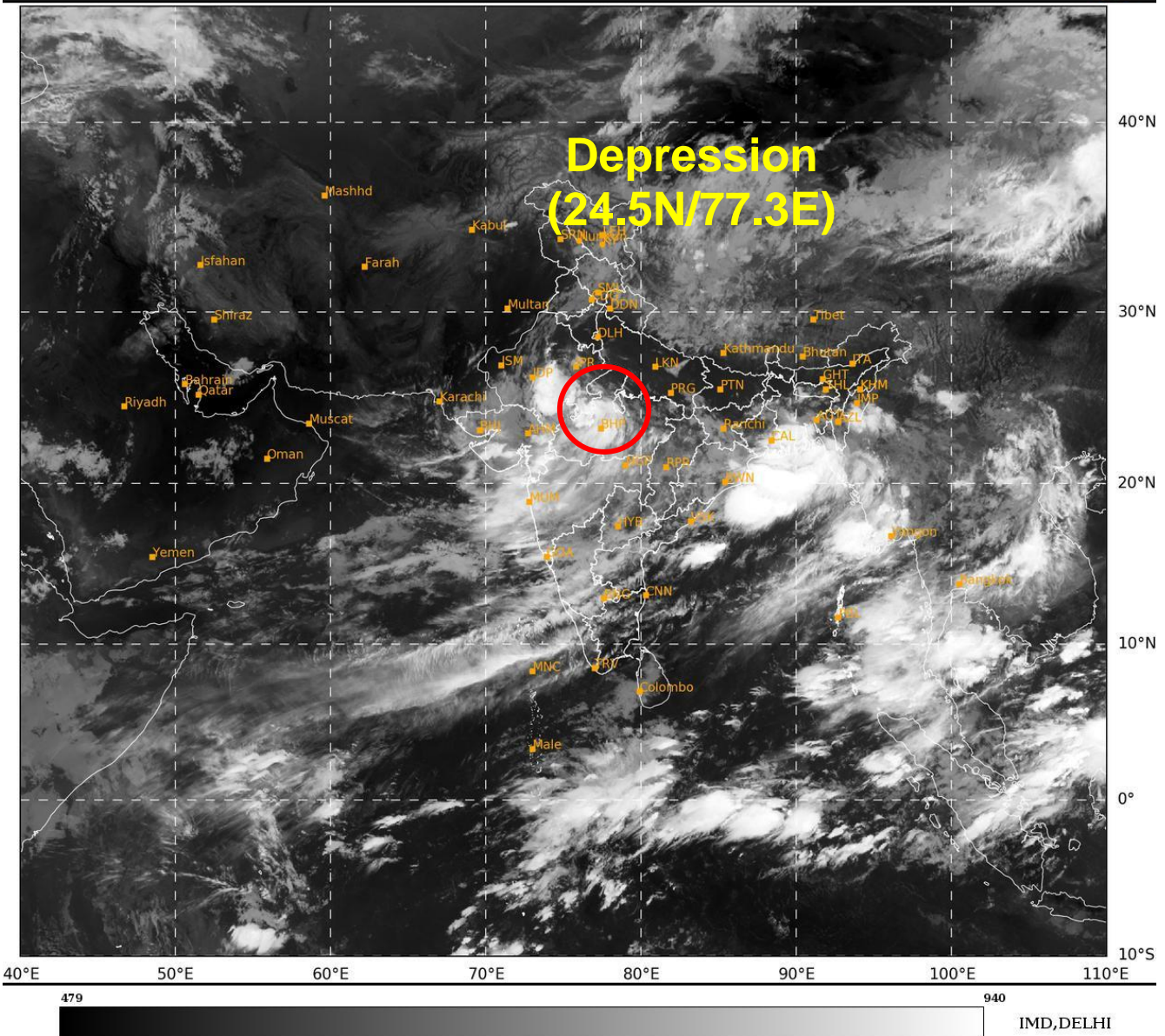
24 HOURS	24-48 HOURS	48-72 HOURS	72-96 HOURS	96-120 HOURS	120-144 HOURS	144-168 HOURS
NIL	NIL	NIL	NIL	NIL	NIL	NIL

*NOTE: EVERY 24HR FORECAST IS VALID UPTO 0300 UTC (0830 IST) OF NEXT DAY

REMARKS:

MOST OF THE NUMERICAL WEATHER PREDICTION MODELS (IMD GFS, NCEP GFS, GEFS, ECMWF, AND NCUM) HAVE CONSENSUS AND INDICATE THAT THE EXISTING DEPRESSION OVER MADHYA PRADESH WOULD MOVE NEARLY WEST-SOUTHWESTWARDS, INTENSIFY INTO A DEEP DEPRESSION OVER SOUTH RAJASTHAN AND ADJOINING NORTH GUJARAT AROUND 27TH AUGUST. THEREAFTER, DIFFERENT MODELS HAVE DIFFERENT KINDS OF EVOLUTION OF THE SYSTEM ALTHOUGH THEY AGREE WITH SUBSEQUENT SOUTH-SOUTHWESTWARDS MOVEMENT DURING NEXT 2 DAYS REACHING SAURASHTRA & KUTCH AND ADJOINING SOUTH PAKISTAN COASTS. THE GFS GROUP OF MODELS INDICATE A BIT FAST MOVEMENT AND EMERGENCE OF THE SYSTEM INTO NORTHEAST AS ON 28TH AUGUST, THE ECMWF AND NCUM SHOWS COMPARATIVELY SLOW MOVEMENT AND DELAYED EMERGENCE INTO NORTHEAST AS BY 30TH AUGUST. THE MODELS PREDICT FURTHER INTENSIFICATION OF THE SYSTEM REACHING OVER NORTHEAST ARABIAN SEA (AS) DURING INITIAL 24 HOURS, WEAKENING THEREAFTER AND DISSIPATION OVER THE NORTH AS. BUT THE FORECASTS FROM VARIOUS MODELS PORTRAY DIFFERENT SCENARIO REGARDING THE PEAK INTENSITY OF THE SYSTEM VARYING FROM MARGINAL CYCLONIC STORM (CS) TO VERY SEVERE CYCLONIC STORM (VSCS).

(MONICA SHARMA)
RSMC NEW DELHI



Cloud distribution: (a) Isolated: <25%, Scattered:25-50%, Broken: 51-75%, Solid:>75%, Convection Intensity: (a) Weak: Cloud Top Temperature (CTT) >-25°C, (b) Moderate: CTT: - 25°C to -40°C, (c) Intense: CTT: - 41°C to -70°C and (d) Very Intense: : Less than -70°C
PROBABILITY OF CYCLOGENESIS (FORMATION OF DEPRESSION):NIL: 0%, LOW: 1-33%, , MODERATE: 34-66% AND HIGH: 67-100%
This is a guidance Bulletin for WMO/ESCAP Panel Member countries. Visit respective National websites for Country specific Bulletins

Observed and Forecast Track of Depression over Northwest Madhya Pradesh and Neighbourhood Based on 0000 UTC (0530 hr IST) of 25th AUGUST, 2024



Cloud distribution: (a) Isolated: <25%, Scattered:25-50%, Broken: 51-75%, Solid:>75%, Convection Intensity: (a) Weak: Cloud Top Temperature (CTT) >-25°C, (b) Moderate: CTT: - 25°C to -40°C, (c) Intense: CTT: - 41°C to -70°C and (d) Very Intense: : Less than -70°C
PROBABILITY OF CYCLOGENESIS (FORMATION OF DEPRESSION): NIL: 0%, LOW: 1-33%, , MODERATE: 34-66% AND HIGH: 67-100%
 This is a guidance Bulletin for WMO/ESCAP Panel Member countries. Visit respective National websites for Country specific Bulletins